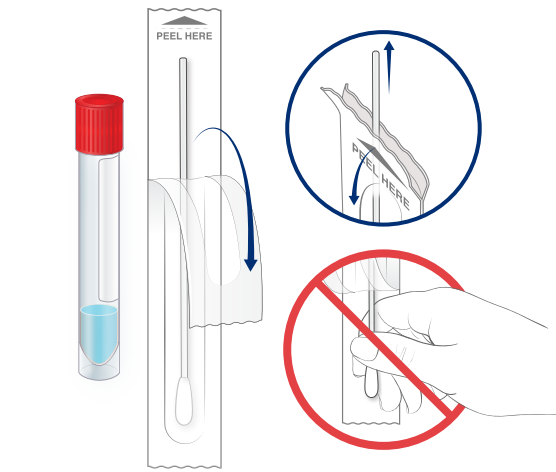


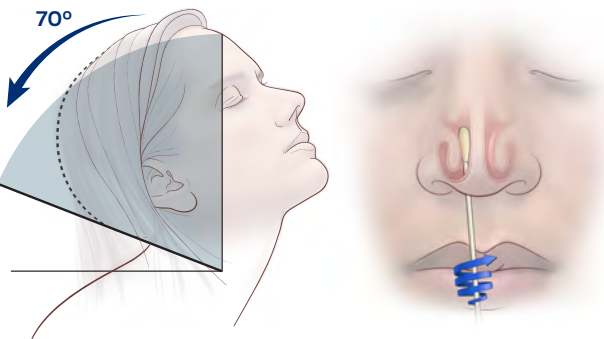
# Instructions for Nasal Swab Self-Collection: COVID-19 Testing

You have been ordered a COVID-19 test using our self-collection process. Please follow the instructions below carefully to obtain a quality specimen. Please check your full name and date of birth on the label. If this information is incorrect, please return it to a staff member. You will receive results in MyChart within 24-48 hour of collection.



## 1 Open Nasal Swab Package

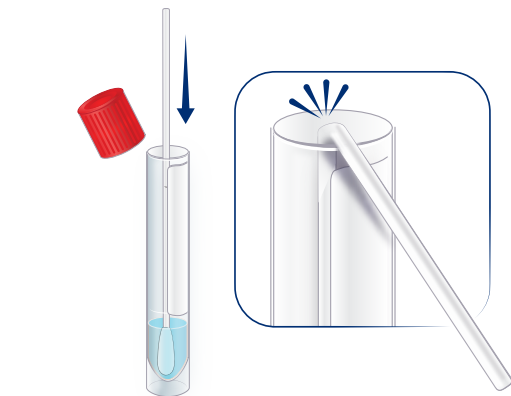
- Remove the nasal swab from the wrapper by pulling the two ends of the wrapper apart.
- Be careful to only touch the swab handle
- Do not touch the swab tip



5 sec  
in each  
nostril

## 2 Swab your Nose

- Tilt your head back 70 degrees
- Gently insert the entire soft tip of the swab (about 1 inch) into one nostril until you feel a bit of resistance.
- Rub the walls of the nostril in a **circular** pattern for five (5) seconds.
- Next, gently insert the same swab into the other nostril and do the same circular swabbing.



## 3 Put the swab into the Transport Tube

- Lower the swab, tip first, into the provided tube.
- Once the tip is near the bottom, break the notched swab in half by bending the swab handle back and forth.
- Screw the Cap onto the tube tightly. This step is very important. If your specimen vial leaks, you will have to repeat the test.

## 4

### Place the transport tube into the biohazard bag

- Place the specimen into the first Biohazard transport bag and zip it shut.
- Place this bag inside the second bag and zip it shut.
- Deposit specimen in designated receptacle or hand to staff

